

**Legend**

**School Type**

- Elementary
- ▲ Middle
- ★ High

**2022-23 MS Boundary** (Black outline)

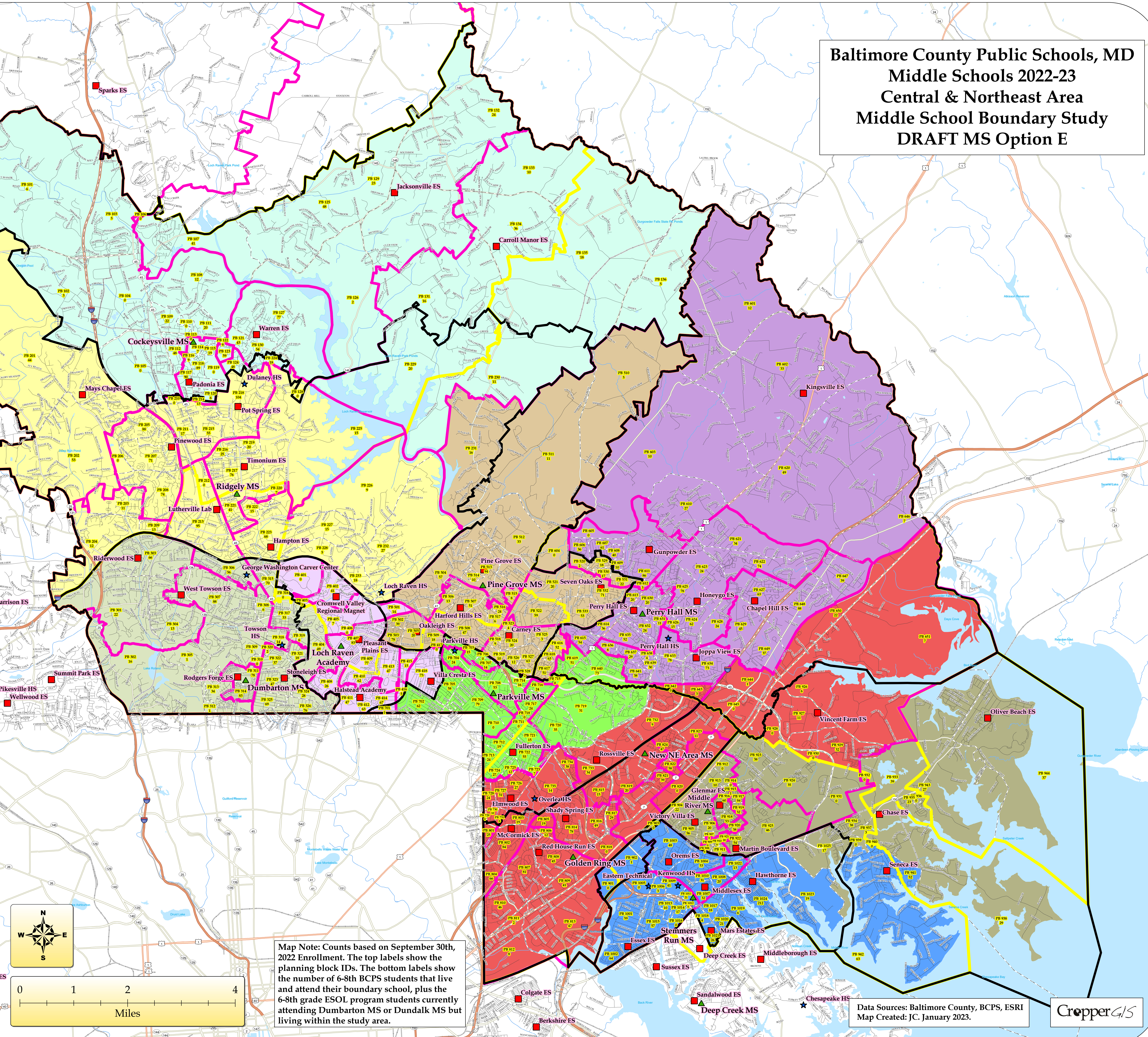
**2024-25 ES Boundary** (Pink outline)

**2022-23 HS Boundary** (Yellow outline)

**Planning Blocks** (Thin grey lines)

**DRAFT MS Option E Attendance Boundaries**

- Cockeysville MS (Light Green)
- Dumbarton MS (Light Blue)
- Loch Raven Academy (Light Purple)
- Middle River MS (Light Brown)
- New Northeast MS (Red)
- Parkville MS (Light Green)
- Perry Hall MS (Purple)
- Pine Grove MS (Light Brown)
- Ridgely MS (Yellow)
- Stemmers Run MS (Blue)



Map Note: Counts based on September 30th, 2022 Enrollment. The top labels show the planning block IDs. The bottom labels show the number of 6-8th BCPS students that live and attend their boundary school, plus the 6-8th grade ESOL program students currently attending Dumbarton MS or Dundalk MS but living within the study area.

Data Sources: Baltimore County, BCPS, ESRI  
Map Created: JC, January 2023.